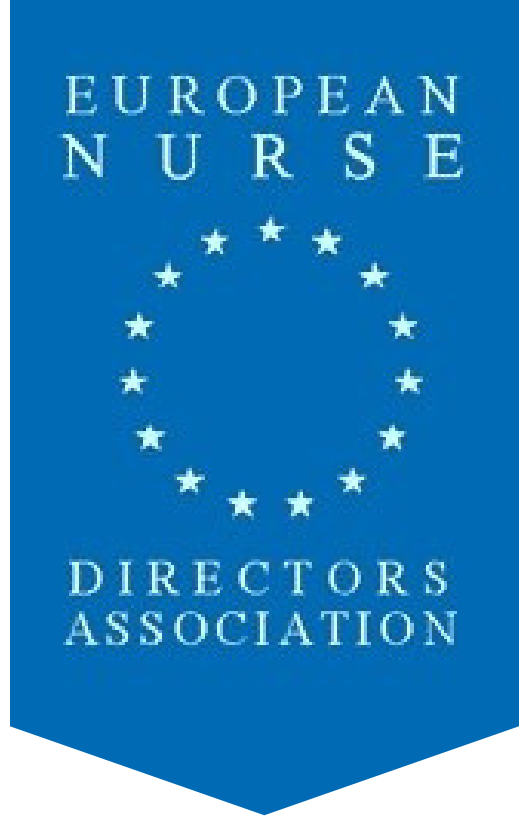


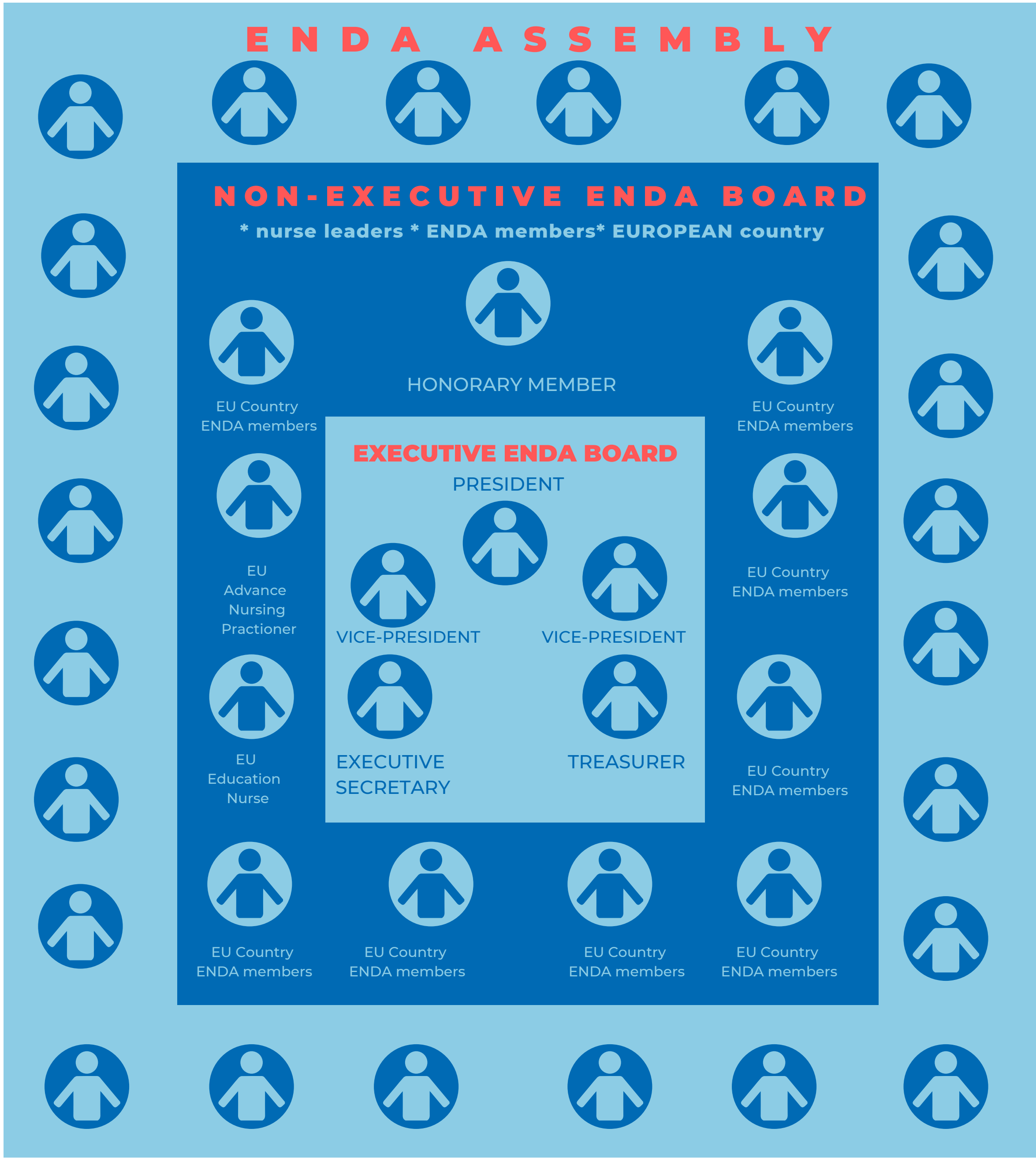
★ **HOSPITAL SETTINGS NURSE**
 ★ **CONSULTANT NURSE**
 ★ **ACADEMIA/EDUCATION NURSE**



★ **ENTREPRENEUR NURSE**
 ★ **RESEARCH NURSE**
 ★ **COMUNITY NURSE/HOME CARE**

75 € / year

NURSE LEADER ★ ENDA MEMBER ★ EUROPEAN COUNTRY



Sharing good practice

Contributing

Mentoring

Learning

Succession planning

Exchanging

Influencing

Visiting

Networking

Addressing challenges

Professional/politics decision making